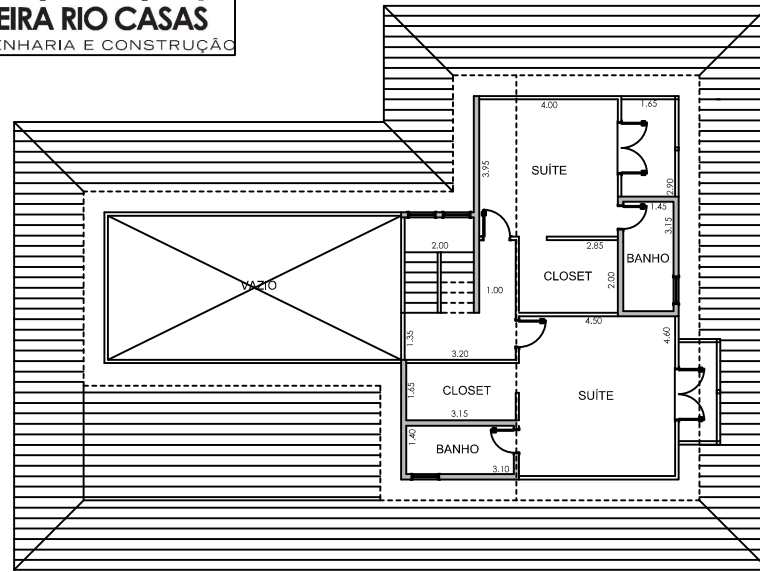
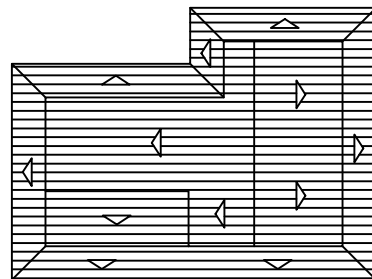


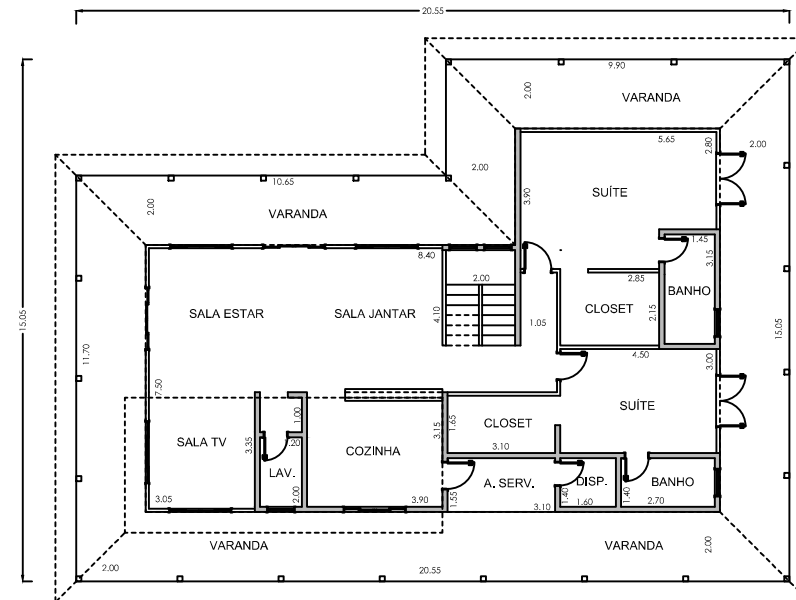
PROJETO SOBRADO: 358,62 M²



PAVIMENTO SUPERIOR: 85,02 M²



TELHADO



PAVIMENTO INFERIOR: 273,60 M²

BEIRA RIO CASAS - Rodovia Luiz de Queiroz, Km 152,5 - Piracicaba/SP.
www.beirariocasas.com.br